


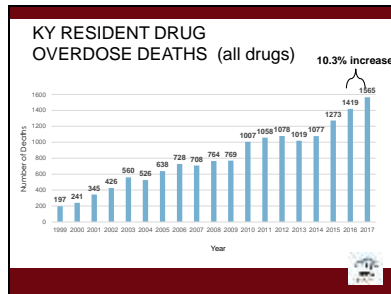
Slide 1

Kentucky Opioid Response Effort KORE

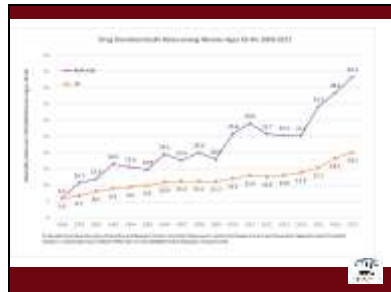
Allen J. Brenzel, M.D., MBA
Medical Director, BHID, CHFS
Associate Professor of Psychiatry and
Pediatrics, University of Kentucky



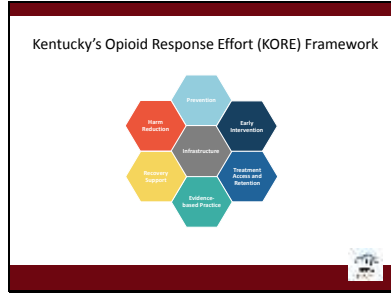
Slide 2



Slide 3

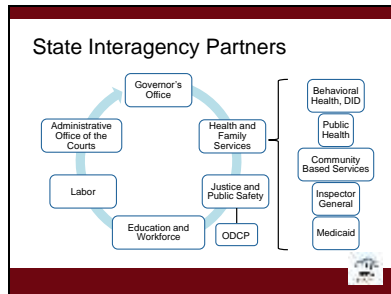


Slide 4



Previously building blocks

Slide 5



Slide 6

Grants for Opioid Use Disorder

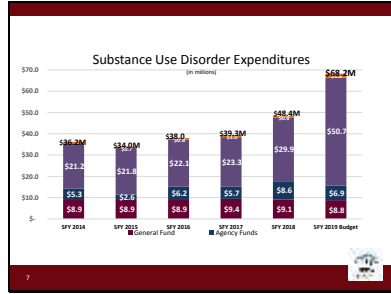
State Targeted Response (STR) to the Opioid Crisis—Year 1
– April 2017
– \$10.5 million

State Targeted Response (STR) to the Opioid Crisis—Year 2
– April 2018
– \$10.5 million

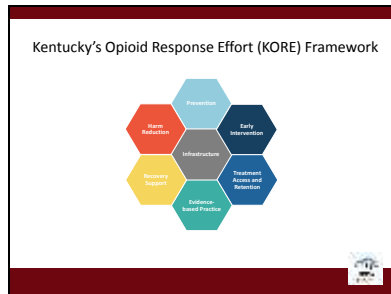
State Opioid Response (SOR) Grant—Year 1
– September 2018
– \$31.5 million
– Supplemental \$16.4 million awarded March 2019

6

Slide 7

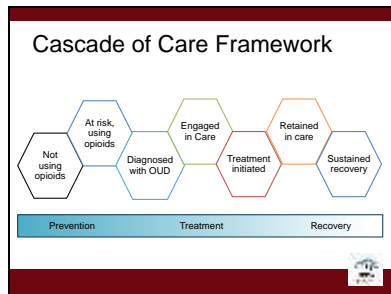


Slide 8

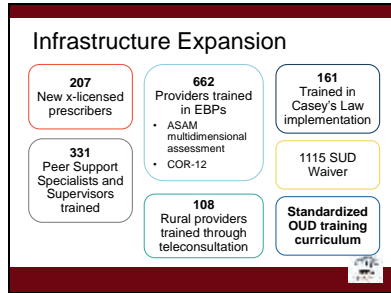


Previously building blocks

Slide 9



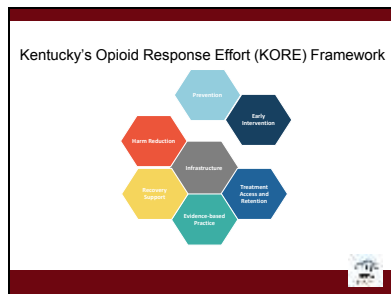
Slide 10



Topics include:

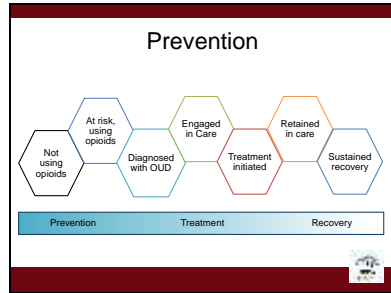
- SUD
- Opioids
- Treatment
- MOUD
- Return to use
- Harm reduction
- Stigma
- Trauma
- Recovery-Oriented Systems of Care

Slide 11

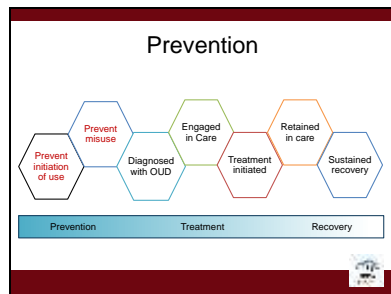


Previously building blocks

Slide 12



Slide 13



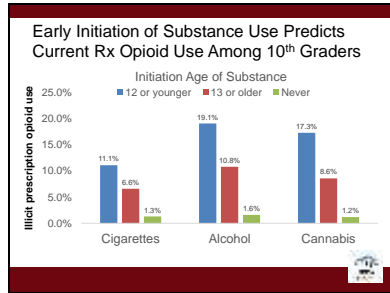
Slide 14

Prevention Initiatives

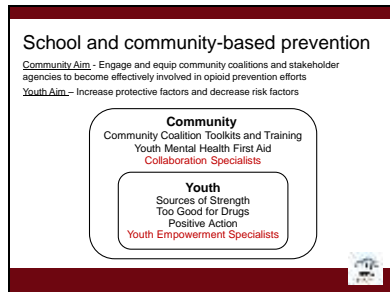
- Primary Prevention In or After School
- Opioid Stewardship Training
- Screening, Brief Intervention, and Referral to Treatment (SBIRT) Training and Promotion
- KASPER Enhancements
- Opioid Overdose Toolkit Training
- Naloxone Distribution

A photograph of several yellow syringes standing upright in a row, positioned to the right of the list of initiatives. A small logo is visible in the bottom right corner of the slide.

Slide 15



Slide 16



Placed a collaboration specialist and youth empowerment specialist at each regional prevention center

Collaboration specialists:

- Engage and equip community coalitions and stakeholder agencies to become effectively involved in opioid prevention efforts

Youth Empowerment Specialists

Empower youth to help resolve community problems

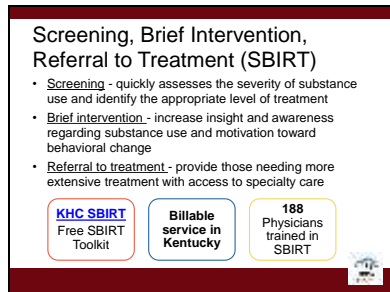
- Twenty-four of 28 prevention specialists have been hired statewide to implement opioid prevention efforts through the Regional Prevention Centers.

Slide 17

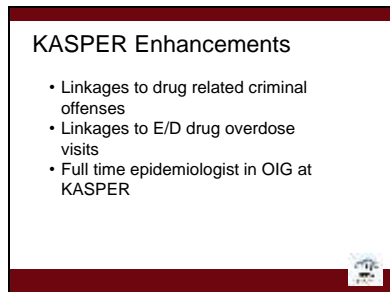


KHA: 33 hospitals made commitments to participate in certification process

Slide 18

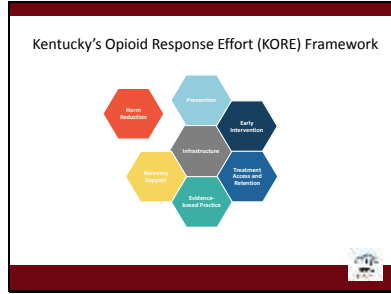


Slide 19



Information for Prescribers: Opioid stewardship, legal considerations, claims and coding

Slide 20



Previously building blocks

Slide 21

Overdose Prevention Toolkit

- Opioid Use Disorder Facts
- Five Essential Steps for First Responders

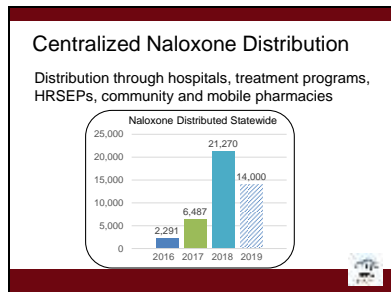
1. Evaluate for signs of OD 4. Support breathing
2. Call 911 5. Monitor person's response
3. Administer naloxone

- Information for Prescribers
- Safety Advice for Patients and Family Members
- Local Community Resources

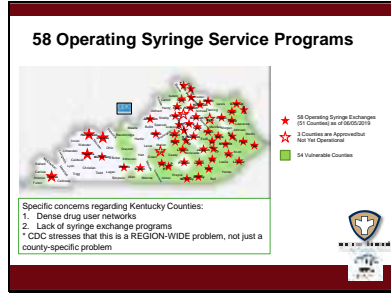
588 Prescribers 726 First Responders 887 Patients and Family Members

Information for Prescribers: Opioid stewardship, legal considerations, claims and coding

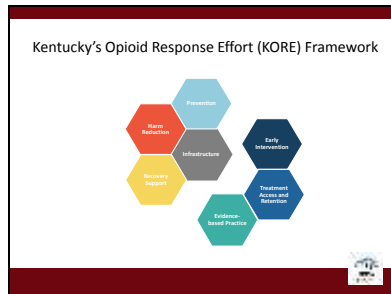
Slide 22



Slide 23

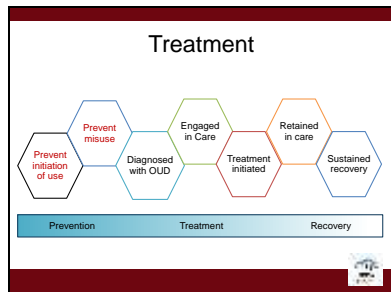


Slide 24

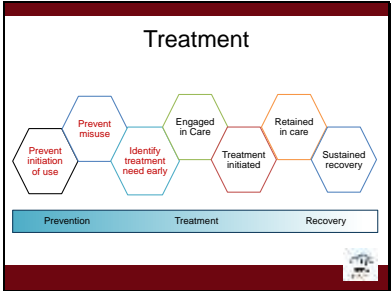


Previously building blocks

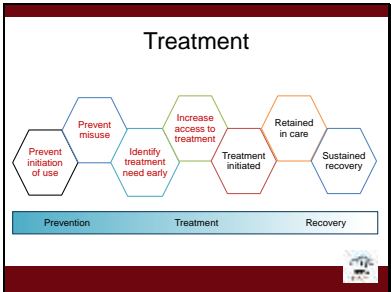
Slide 25



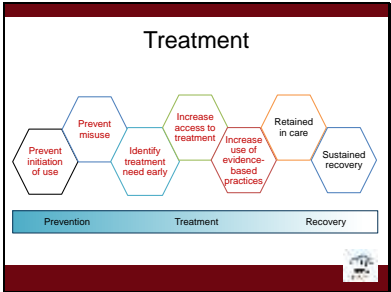
Slide 26



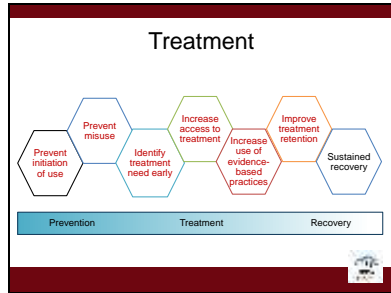
Slide 27



Slide 28



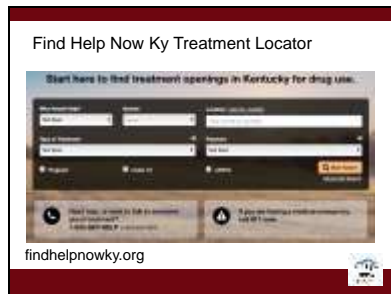
Slide 29



Slide 30

-
- The slide titled "Treatment" lists several key initiatives:
- Treatment Locator
 - Bridge Clinics
 - Quick Response Teams
 - Expansion of access to Medication for Opioid Use Disorder
 - Treatment Stipend Programs
 - Supports for Federally Qualified Health Centers (FQHC's) to provide OUD treatment
 - Coordinated System of Care for Pregnant and Parenting Women
 - Community Re-entry Services for Justice Involved individuals
- A small logo is visible in the bottom right corner of the slide.

Slide 31



Common barrier preventing screening


Slide 32

Bridge Clinics

- Conduct emergent assessments
- Initiate FDA-approved medications for OUD, HCV and HIV testing
- On-site peer support and/or care coordination
- Overdose prevention training & naloxone
- Link to appropriate levels of ongoing care

University of Kentucky
University of Louisville
St. Elizabeth
Baptist Health (Lexington & Corbin)
Appalachian Regional Healthcare (Hazard)
Norton Healthcare

1203
Patients
served to date




Withdrawal increases risk of overdose, criminal activity

Slide 33

Quick Response Teams


- Assertive outreach from team comprised of peer support specialists, first responders, treatment providers
- Home visits within 24-72 hours of overdose or opioid-related event
- Facilitate treatment, harm reduction services, support to loved ones
- Message to survivor: WE CARE



Slide 34

OUD Treatment Access


- Office-Based Opioid Treatment
 - Implement MOUD protocols in Federally Qualified Health Centers, Rural Health Clinics, and Primary Care Offices
- Residential Therapeutic Recovery Community Pilot at Kenton County Detention Center
 - Evidence-based, trauma-informed, COR-12 model, and provides access to MOUD
 - Six months of case-managed, re-entry & aftercare services with linkages to recovery support services



Slide 35

Community Pharmacy Care Delivery Model for Naltrexone IM

- Collaborate with community pharmacists, OUD treatment providers, local prison and drug court officials
- Develop training for administration and management of Vivitrol
- Implement practice model in four regions: Northern KY, Lexington, Louisville, Eastern KY



Slide 36

Treatment & Methadone Stipends

Objective: Increase rapid access to treatment for individuals who lack a payer source


Eligible Programs

- Licensed AODE/BHSO residential programs
- CMHCs with residential and/or IOP
- Provide access to MOUD

Eligible clients:

- Diagnosed with an OUD
- Income < 150% FPL
- Ky resident
- Lack a payer source


2,034
Clients served to date



Slide 37

Integrated and Coordinated Care for Women Who are Pregnant and Have an OUD

- University of Kentucky – PWHops
- St. Elizabeth Hospital – Baby Steps
- Appalachian Regional Healthcare (Harard)
- Pregnancy and Beyond
- Centerstone
- Chrysalis House
- Plan of Safe Care




Slide 38

Community Reentry Coordination

- Reintegration services for inmates with OUD or co-occurring OUD/SMI
- In-reach coordinators:
 - Targeted case management and linkages to supports
 - Collaborative treatment and services planning
 - Assist with MCO selection, Medicaid, SSI

In-Reach Locations:


- KSR Complex
- Northpoint Training Center
- Western KY Correctional Complex
- Green River Correctional Complex
- Little Sandy Correctional Complex




Aid in smooth reintegration into community

Slide 39

Kentucky's Opioid Response Effort (KORE) Framework



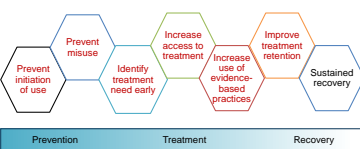
The diagram consists of six interconnected hexagonal blocks arranged in a circle. Starting from the top and moving clockwise, the blocks are: Prevention (light blue), Early Intervention (dark blue), Treatment, Access and Retention (dark blue), Evidence-based Practice (teal), and Recovery Support (yellow). A central grey block is labeled 'Infrastructure'.




Previously building blocks

Slide 40

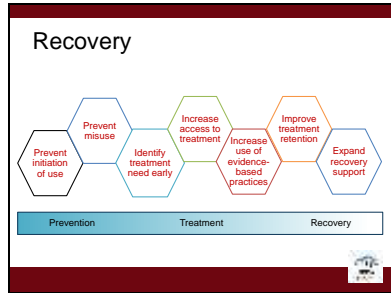
Recovery



The diagram shows a horizontal flow of seven interconnected hexagonal blocks. The first two blocks are under the 'Prevention' header: 'Prevent initiation of use' and 'Prevent misuse'. The next three blocks are under the 'Treatment' header: 'Identify treatment need early', 'Increase access to treatment', and 'Increase use of evidence-based practices'. The final two blocks are under the 'Recovery' header: 'Improve treatment retention' and 'Sustained recovery'.



Slide 41



Slide 42

Recovery Supports



- Recovery Residences/Oxford Houses
- Recovery Community Centers
- Access to Recovery Voucher Program
- Strategic Initiative for Transformational Employment (SITE)
- Double Trouble in Recovery and SMART Recovery Groups

Oxford House, Decatur Park

Slide 43

Recovery Residence Expansion

- Increase the number of Level 1 Oxford Houses
- Increase Level 2 & 3 recovery houses supporting MOUD
- Adopt National Alliance for Recovery Residences quality standards and certification

Level 1	Level 2	Level 3	Level 4
Peer-Run	Monitored	Supervised	Service Provider
Alcohol & Illicit Drug Free			
Safe, Clean, & Dignified			
Peer Supportive Environment			
Accountability to Neighborhood, Ethics & National Standards			

Slide 44

Recovery Community Centers

- Community-based, non-clinical setting that is safe, welcoming, peer-led, and supports all paths to recovery

RCC Services/Resources

- Peer Support
- Mutual aid groups
- Advocacy
- Linkage to housing support
- Job training and employment support
- Social activities

RCC Locations

- Centerstone (Jefferson)
- Four Rivers (McCracken)
- Kentucky River (Perry)
- NorthKey (Kenton+)
- Voices of Hope (Fayette)
- Volunteers of America (Clay)

Six centers in development:

Centerstone, NorthKey, Kentucky River, Four Rivers, Voices of Hope (Fayette County), Volunteers of America (Clay County)

TAYLRD Expansion: Centerstone, Four Rivers, Kentucky River, Communicare, Pathways

Slide 45

Access to Recovery (ATR) Program

- Purpose:** Reduce barriers to entering and maintaining long-term recovery
- Aim:** Increase recovery capital

ATR Pilot Locations

- Jefferson County
- Kenton County
- Letcher County

```
graph TD; P[Person in Recovery] --- V[Vocational Employment Services]; P --- B[Basic Needs]; P --- C[Clothing]; P --- CH[Childcare]; P --- T[Transportation]; P --- R[Recovery Housing];
```

- Must be a KY resident at 200% poverty level
- Does not cover the cost of Tx

Slide 46

Mutual Aid Support Groups

- Nonprofessional support groups that include members who share the same problem, voluntarily support one another, and provide social, emotional and informational support for sustained health and wellness
- Double Trouble in Recovery (DTR)
 - www.dtrky.org
- Smart Recovery Friends and Family
 - www.smartrecovery.org


DTR: Twelve-Step fellowship of men and women who share their experience, strength to help others recover: www.dtrky.org

SMART: Science-based, alternative to twelve-step meetings based on the tools of SMART Recovery and CRAFT (Community Reinforcement Approach & Family Training): www.smartrecovery.org

Slide 47

Strategic Initiative for Transformational Employment (SITE)

1. Support for individuals in recovery seeking (re)employment and job training through Kentucky Comprehensive Career Centers
2. Support for individuals who enter employment to ensure they retain and succeed in their jobs
3. Support for businesses to implement policies for hiring and retaining employees recovering from OUD



SITE will develop six Employer Resource Networks (ERN), each comprised of employers that support the improvement of policies and practices that better meet the needs of their substance-affected and recovering employees.

For individuals seeking (re)employment and training, a visit to a comprehensive Kentucky Career Center will offer services that bridge the gap between recovery and productive participation in the workforce. SITE Job Entry and Retention Support Specialists will assist with procuring job placement with an employer providing transformational employment opportunities. While SITE Success Coaches will work to ensure the job placement is successful for both the employee and the employer.

Slide 48





Slide 49

SITE: Employer Toolkit

- Guides employers' understanding of OUD in the workplace
- Provides best practice recommendations for prevention, treatment, and recovery support

<https://www.khcollaborative.org/employerhub/>



Slide 50

Questions?

Allen.Brenzel@ky.gov

50

